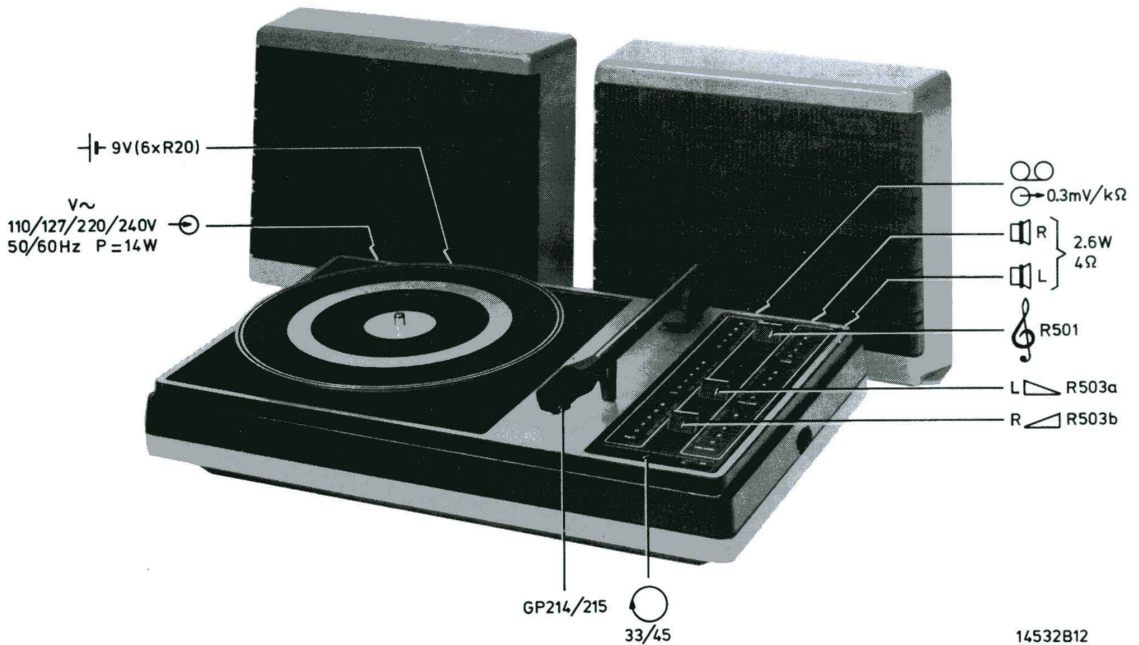


Service  
Service  
Service

# Service Manual



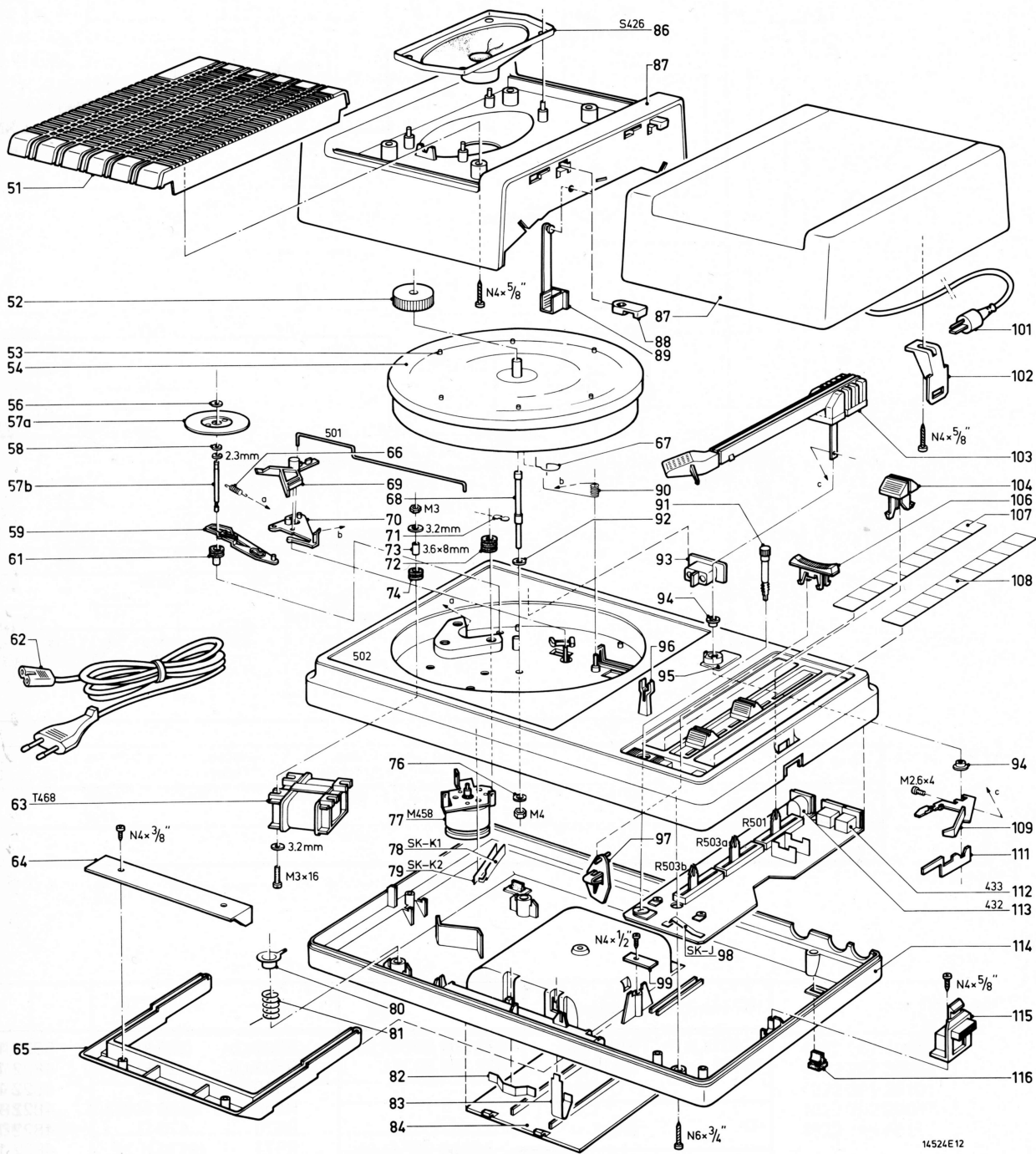
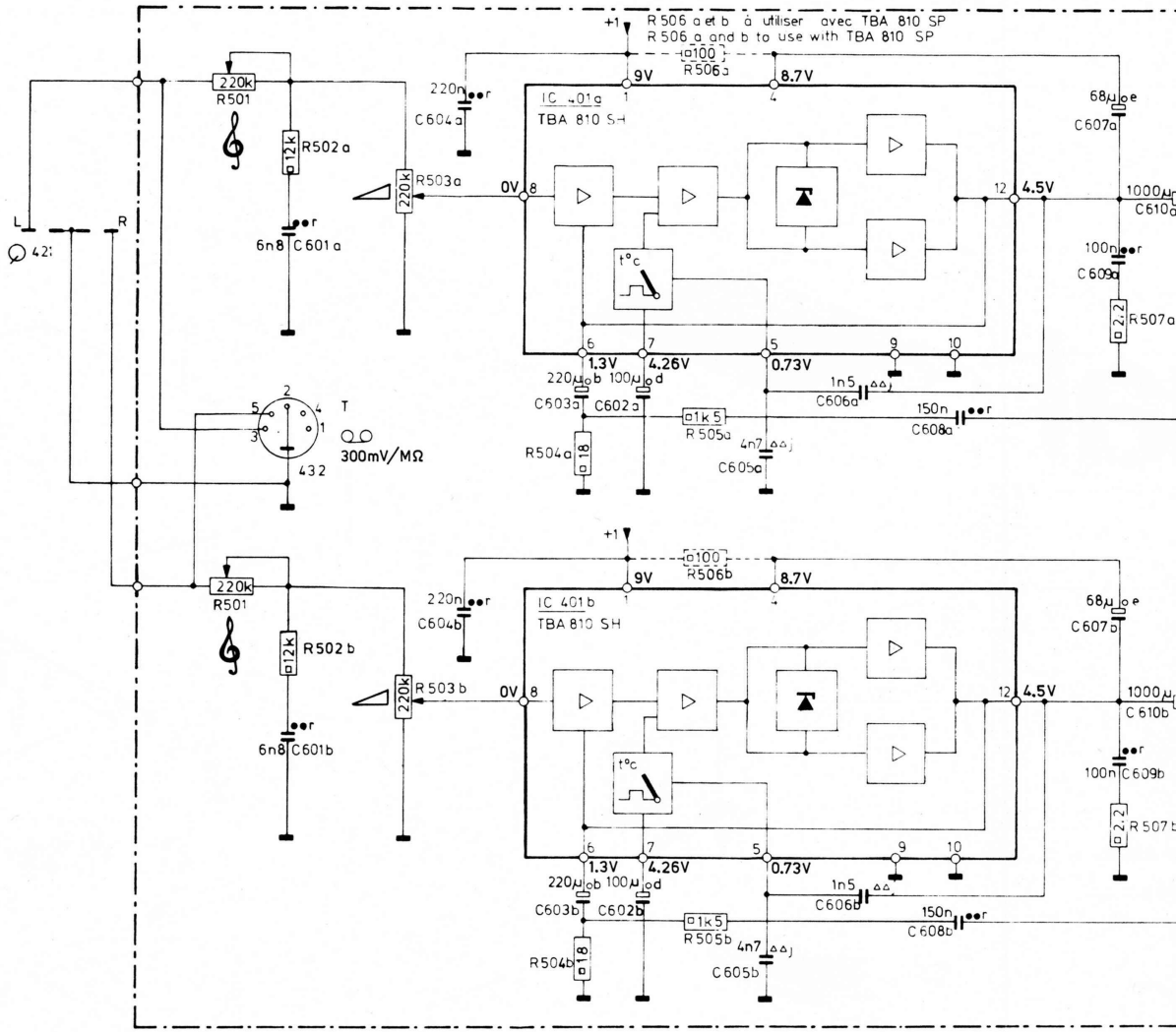


Fig. 1

14524E12

|                |     |      |      |      |              |      |      |      |      |      |
|----------------|-----|------|------|------|--------------|------|------|------|------|------|
| R              | 501 | 502a | 503a | 504a | 505a<br>506a | 507a |      |      |      |      |
| C              |     | 601a | 604a | 607a | 602a         | 605a | 606a | 608a | 607a | 610a |
| MISC<br>DIVERS | 421 | 432  |      | 401a |              |      |      |      |      | 609a |

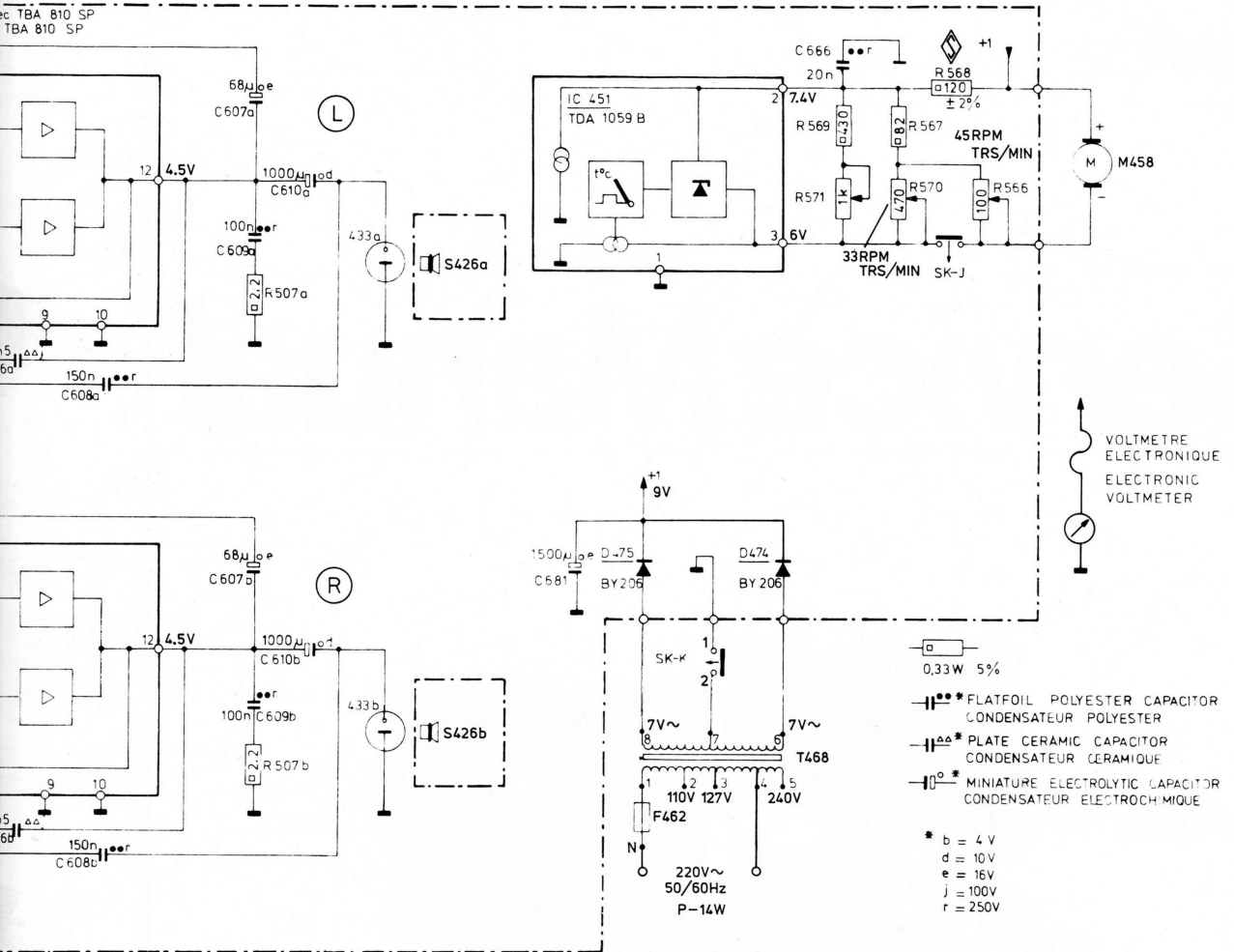


|                 |      |      |      |              |      |      |      |      |      |
|-----------------|------|------|------|--------------|------|------|------|------|------|
| R               | 502b | 503b | 504b | 505b<br>506b | 507b |      |      |      |      |
| C               | 601b | 604b | 603b | 602b         | 605b | 606b | 608b | 607b | 610b |
| MISC<br>DIVERS. |      |      | 401b |              |      |      |      |      | 609b |

Fig. 2

| -IC-     |          |                | -R-     |              |                |
|----------|----------|----------------|---------|--------------|----------------|
| IC401a,b | TBA810SH | 4822 209 80297 | R501a,b | 220 kΩ       | 5322 105 10245 |
| IC451    | TDA1059B | 4822 209 80361 | R503a,b | 220 kΩ (log) | 4822 105 10276 |
|          |          |                | R566    | 100 Ω        | 4822 100 10075 |
|          |          |                | R568    | 120 Ω ± 2 %  | 4822 110 63083 |
|          |          |                | R570    | 470 Ω        | 4822 100 10038 |
|          |          |                | R571    | 1 kΩ         | 4822 100 10241 |
| -D-      |          |                |         |              |                |
| D474,475 | BY206    | 4822 130 30839 |         |              |                |
| D476     | BY216    | 4822 130 41119 |         |              |                |

|            |      |      |      |      |      |          |
|------------|------|------|------|------|------|----------|
| 507a       |      |      |      | 569  | 567  | 568      |
|            |      |      |      | 571  | 570  | 566      |
| 60a        | 608a | 607a | 610a | 681  |      |          |
| 609a       |      |      |      | 666  |      |          |
| 433a S426a |      |      |      | 475  | 451  | 474      |
|            |      |      |      | SK-K | T468 | 476 SK-J |
|            |      |      |      | M458 |      |          |



|            |      |      |      |      |  |  |
|------------|------|------|------|------|--|--|
| 507b       |      |      |      |      |  |  |
| 606b       | 608b | 607b | 610b |      |  |  |
| 609b       |      |      |      |      |  |  |
| 433b S426b |      |      |      |      |  |  |
|            |      |      |      | F462 |  |  |

14464D12

Fig. 2

|  |      |  |   |
|--|------|--|---|
| 5322 105 10245<br>4822 105 10276<br>4822 100 10075<br>4822 110 63083<br>4822 100 10038<br>4822 100 10241 | -S-  | S426 (86) AD4686/X4 4822 240 20177   | -Miscellaneous-Divers-<br>432 (113) 4822 267 40209<br>433 (112) 4822 267 30264<br>M458 (77) 4822 361 30101<br>F462 4822 252 20007<br>T468 (63) 4822 145 40147 |
| 2 %  | -SK- | SK-K1 (78) 4822 290 80226<br>SK-K2 (79) 4822 290 80225<br>SK-J (98) 4822 492 62133 |   |

**LIST OF MECHANICAL PARTS (Fig. 1)**  
**NOMENCLATURE DES PIÈCES MECANIQUES (Fig. 1)**

|           |                |            |                |     |                |
|-----------|----------------|------------|----------------|-----|----------------|
| 51        | 4822 444 20215 | 74         | 4822 325 60177 | 96  | 4822 402 60661 |
| 52        | 4822 532 60624 | 76         | 4822 530 80187 | 97  | 4822 402 60658 |
| 53        | 4822 462 40362 | 77 (M458)  | 4822 361 30101 | 98  | 4822 492 62133 |
| 54        | 4822 528 10335 | 78 (SK-K1) | 4822 290 80226 | 99  | 4822 402 60657 |
| 56        | 4822 532 50827 | 79 (SK-K2) | 4822 290 80225 | 101 | 4822 264 30041 |
| 56+57+58  | 4822 535 60033 | 80         | 4822 290 30096 | 102 | 4822 417 50096 |
| 59        | 4822 402 30099 | 81         | 4822 492 31089 | 103 | 4822 251 70164 |
| 61        | 4822 325 80184 | 82         | 4822 492 61902 | 104 | 4822 410 22009 |
| 62        | 4822 321 10105 | 83         | 4822 492 61688 | 106 | 4822 411 40024 |
| 63 (T468) | 4822 145 40147 | 84         | 4822 444 60356 | 107 | 4822 454 20387 |
| 64        | 4822 444 40095 | 86 (S426)  | 4822 240 20177 | 108 | 4822 454 20388 |
| 65        | 4822 498 30086 | 87         | 4822 444 20214 | 109 | 4822 402 60582 |
| 66        | 4822 492 31401 | 88         | 4822 417 60091 | 111 | 4822 492 40723 |
| 67        | 4822 492 40724 | 89         | 4822 401 10452 | 112 | 4822 267 30264 |
| 68        | 4822 535 91053 | 90         | 4822 492 51156 | 113 | 4822 267 40209 |
| 69        | 4822 402 60584 | 91         | 4822 413 30755 | 114 | 4822 444 50265 |
| 70        | 4822 402 30098 | 92         | 4822 532 10561 | 115 | 4822 417 50098 |
| 71        | 4822 460 20078 | 93         | 4822 265 20169 | 116 | 4822 462 40016 |
| 72        | 4822 325 80123 | 94         | 4822 532 50834 |     |                |
| 73        | 4822 532 20311 | 95         | 4822 444 60355 |     |                |

GB

Safety regulations require that the set be restored to its original condition and that parts which are identical with those specified, be used.

NL

Veiligheidsbepalingen vereisen, dat het apparaat bij reparatie in zijn oorspronkelijke toestand wordt teruggebracht en dat onderdelen, identiek aan de gespecificeerde, worden toegepast.

F

Les normes de sécurité exigent que l'appareil soit remis à l'état d'origine et que soient utilisées les pièces de rechange identiques à celles spécifiées.

D

Die Sicherheitsvorschriften erfordern, dass das Gerät sich nach der Reparatur in seinem originalen Zustand befindet und dass die benutzten Einzelteile den aufgeführten Teilen identisch sind.

SF

Korjatussa laitetta on turvallisuusyistä ehdottomasti eneteltävä oikein ja käytettävä tehtaan määräämiä alkuperäisvaraosia.

I

Le norme di sicurezza esigono che l'apparecchio venga rimesso nelle condizioni originali e che siano utilizzati i pezzi di ricambio identici a quelli specificati.

S

Säkerhetsbestämmelserna kräver att varje reparation skall utföras korrekt med hänsyn till ursprunglig placering av komponenter, ledningar etc. och med användning af föreskrivna reservdelar.

DK

Myndighedernes sikkerheds- og radiostøjbestemmelser kræver, at enhver reparation skal udføres korrekt m.h.t. overholdelse af originalplacering og montering af komponenter, ledningsbundter, etc., og ved anvendelse af de foreskrevne reservedele.

N

Sikkerhetsbestemmelser kreves at apparatet blir gjenopprettet til original utførelse og at deler som er identiske med de som er spesifisert, blir benyttet.

| MISC.                | C            | R    |
|----------------------|--------------|------|
| SK-J                 |              | 569  |
|                      |              | 571  |
| IC451                | 666          | 567  |
|                      |              | 568  |
|                      |              | 570  |
|                      |              | 566  |
| D476<br>D475<br>D474 | 602b         | 505b |
|                      |              | 504b |
|                      |              | 503b |
|                      |              | 507b |
| IC401b               | 605b<br>606b | 608b |
|                      |              | 603b |
|                      |              | 609b |
|                      |              | 605b |
| IC401a               | 605a<br>606a | 601b |
|                      |              | 604b |
|                      |              | 607b |
|                      |              | 502b |
| BU432<br>BU433a,b    | 501a         | 610b |
|                      |              | 681  |
|                      |              | 608a |
|                      |              | 603a |
| BU432<br>BU433a,b    | 501a         | 505a |
|                      |              | 504a |
|                      |              | 507a |
|                      |              | 602a |
| BU432<br>BU433a,b    | 501a         | 609a |
|                      |              | 605a |
|                      |              | 606a |
|                      |              | 601a |
| BU432<br>BU433a,b    | 501a         | 604a |
|                      |              | 607a |
|                      |              | 610a |
|                      |              | 501a |
| MISC.                | C            | R    |

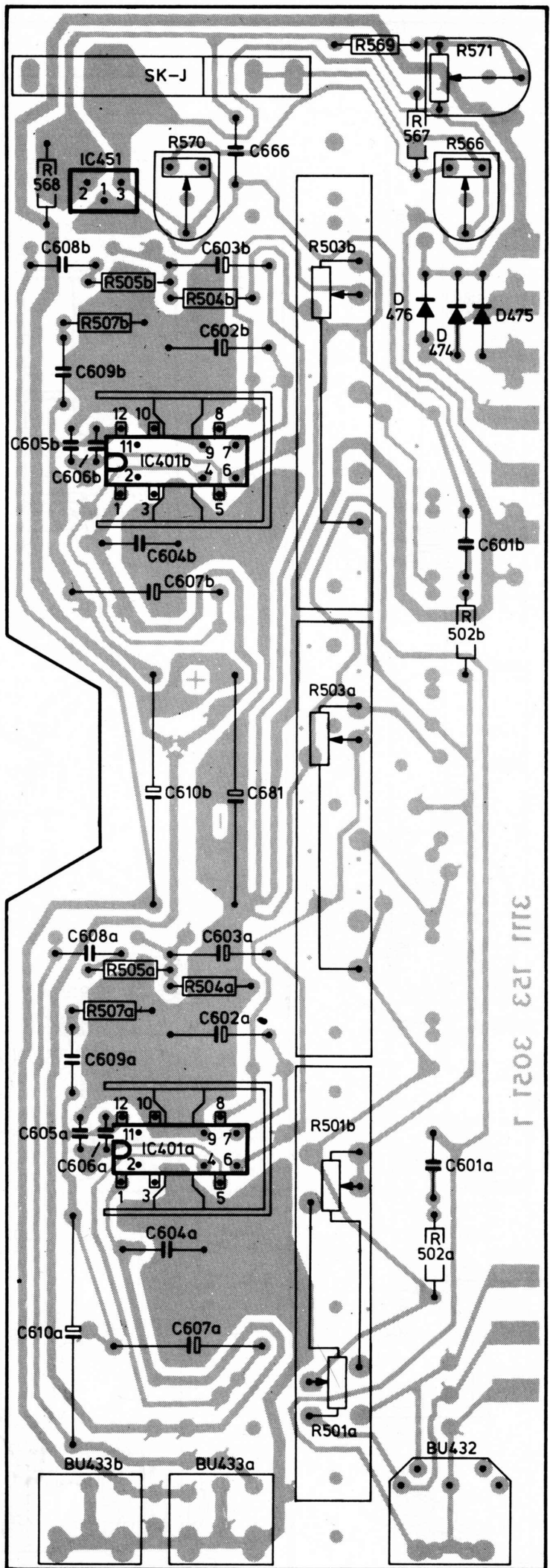


Fig. 4

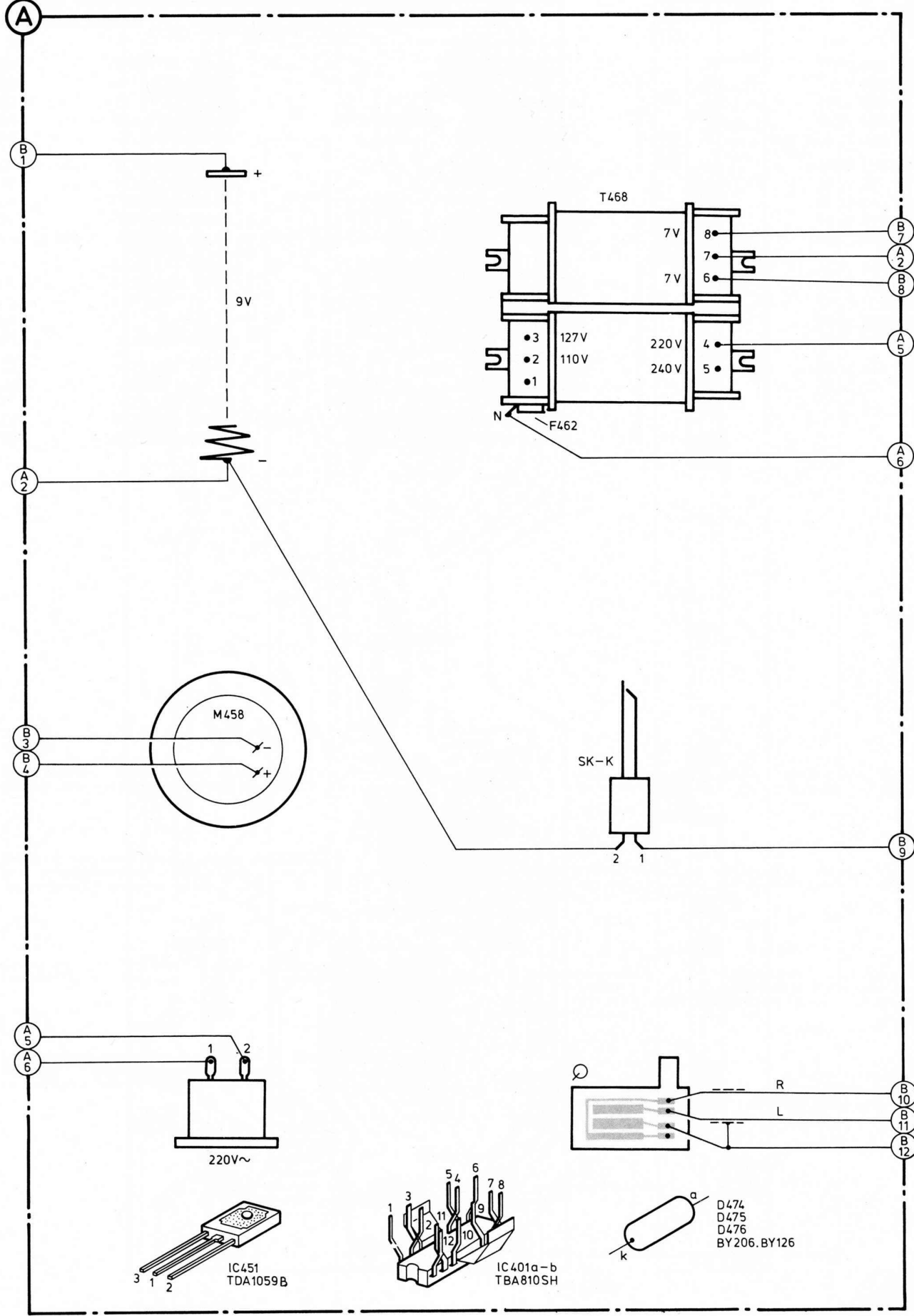
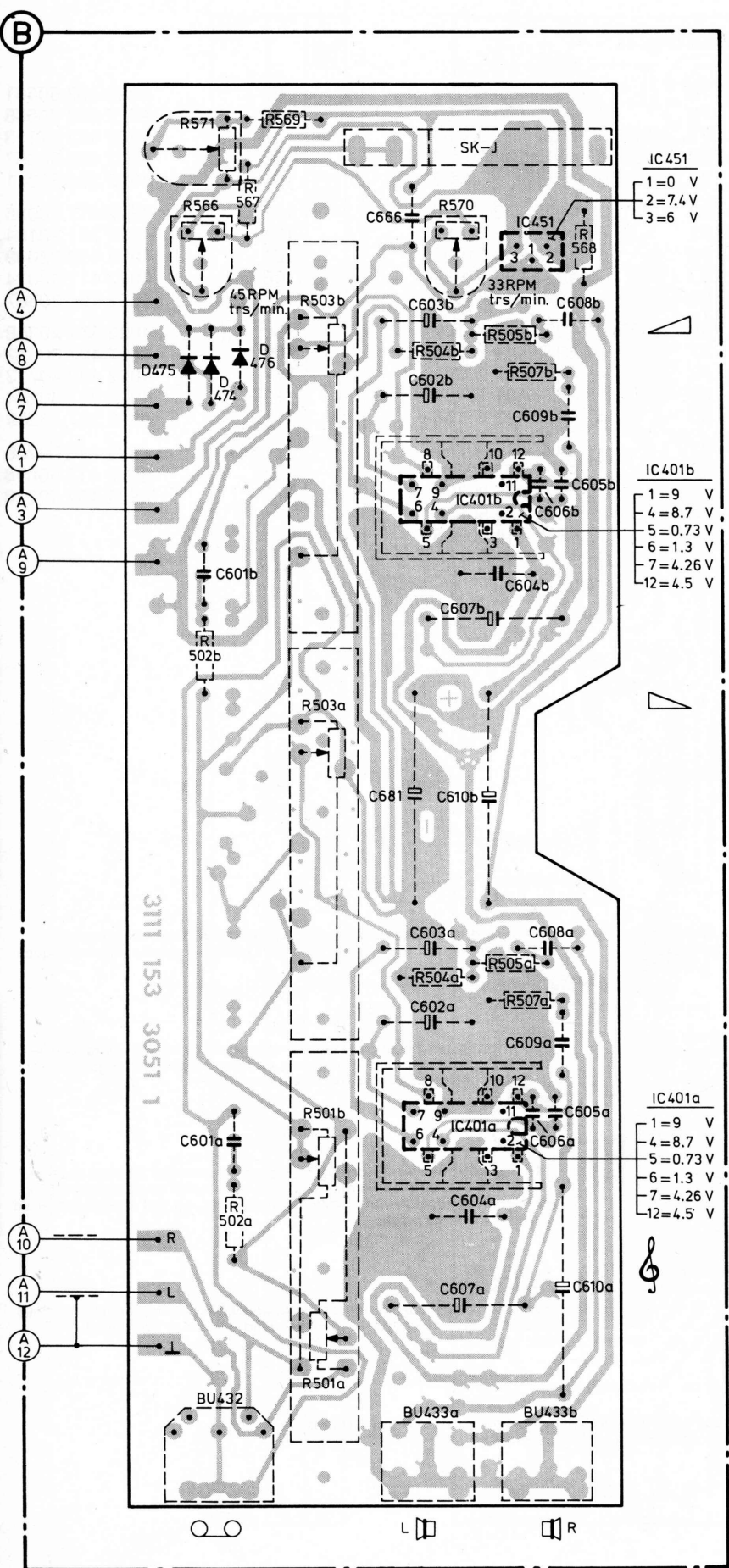


Fig. 3



| MISC.                 | C                    | R                    |
|-----------------------|----------------------|----------------------|
| SK-J                  |                      | 569<br>571           |
| IC451                 | 666                  | 567                  |
| T468                  |                      | 568<br>570<br>566    |
|                       | 608b<br>603b         | 505b<br>503b<br>504b |
| D475<br>D476<br>D474  | 602b                 | 507b                 |
|                       | 609b                 |                      |
| IC401b                | 605b<br>606b         |                      |
|                       | 601b<br>604b         |                      |
|                       | 607b                 |                      |
|                       |                      | 502b                 |
|                       |                      | 503a                 |
|                       | 681<br>610b          |                      |
| M458                  | 608a<br>603a         | 505a<br>504a         |
| SK-K                  | 602a                 | 507a                 |
|                       | 609a                 |                      |
| IC401a                | 605a<br>606a<br>601a | 501b                 |
|                       | 604a                 | 502a                 |
|                       | 610a<br>607a         |                      |
|                       |                      | 501a                 |
| BU432<br>BU<br>433a,b |                      |                      |
| MISC.                 | C                    | R                    |